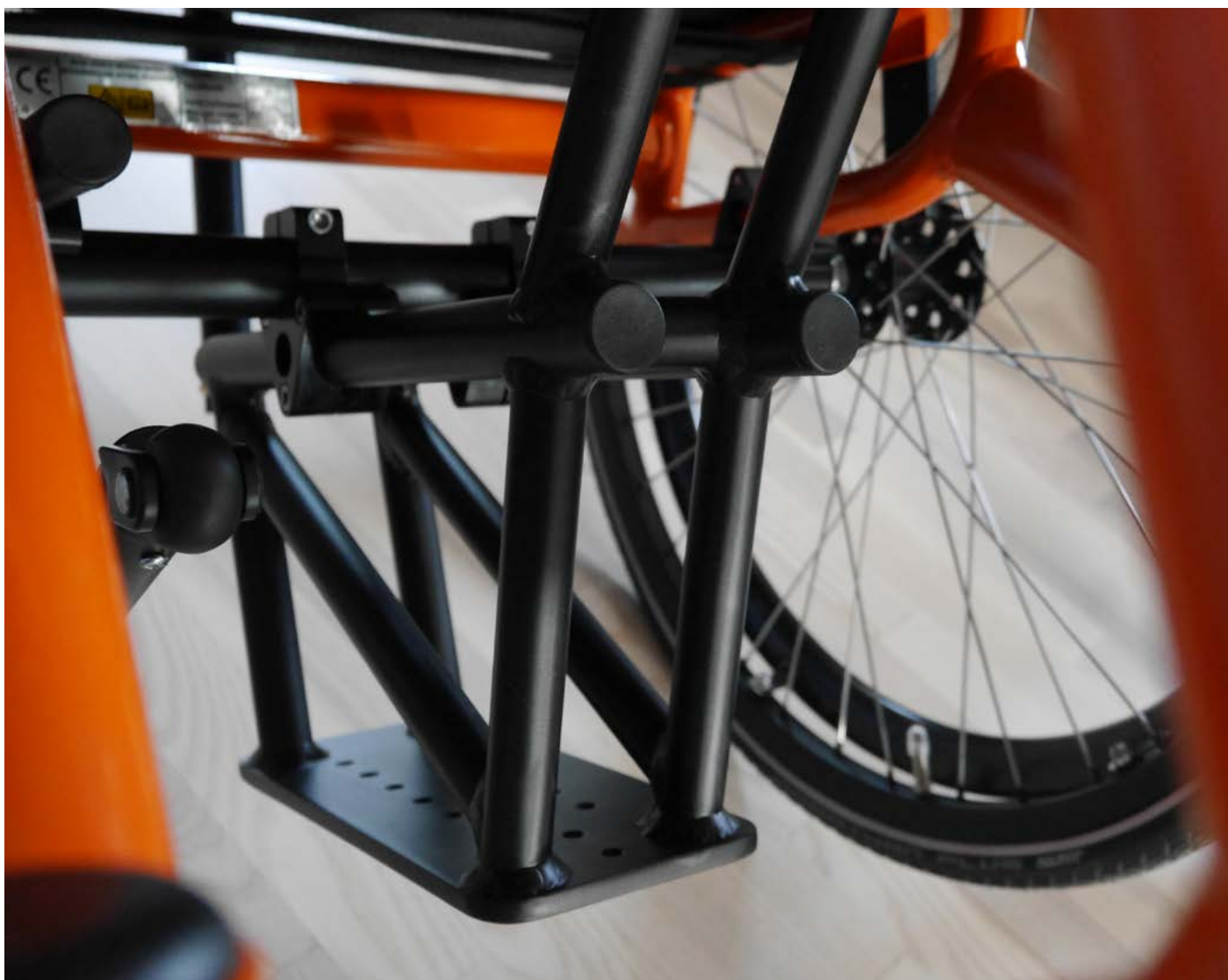




WOLTURNUS



W5 with the
DAHL Docking-System



Built for Freedom

Since 2002, Wolturnus has been producing high-quality, custom-made wheelchairs, sports wheelchairs and handbikes. All Wolturnus wheelchairs are designed and manufactured in Denmark and adapted down to the smallest detail to the wishes, requirements, and lifestyle of each individual user. All our products are CE marked. This guarantees that they comply with all EU safety requirements in accordance with the directives of the European Commission. As a manufacturer of medical devices, we have also voluntarily decided to have the production and development of our products monitored by the German TÜV. In addition, selected products have undergone crash testing.

On request, Wolturnus wheelchairs are available with an ergonomic seat, where the rear part of the seat is horizontal and the front part is angled upwards. This so-called Ergo seat stabilizes the pelvis particularly effectively. The Ergo seat is always used in combination with the strap-adjustable seat upholstery. This ensures good pelvic control, optimal weight distribution, and thus minimized pressure load. Our frames are made of aluminum 7020 (AlZn4.5Mg1), the strongest weldable aluminum alloy, whose strength even surpasses that of all titanium alloys. The lightweight, robust, individually adapted Wolturnus wheelchairs give users the greatest possible freedom to lead an active and self-determined life.

Durable, safe, active

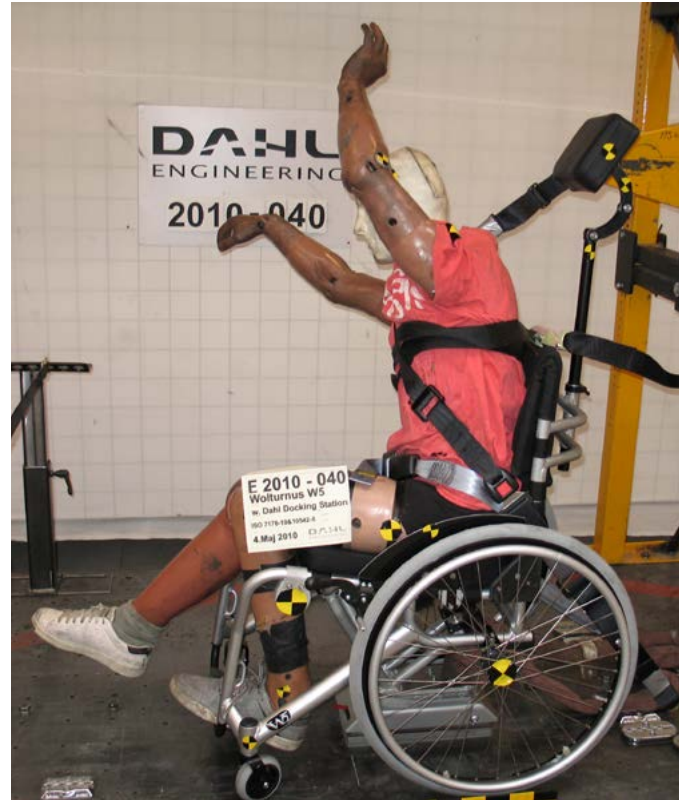
W5 with the DAHL Docking System

Mobility is having liberty. Not only in the wheelchair, but also the freedom of being able to move effortlessly around in traffic. We have therefore also considered, the interior design and the use of handicap cars with feedback from our active wheel chair users, when developing wheelchairs.

We want to be on the frontier of the development of wheelchairs that are safe in traffic. For that reason, all our wheelchairs are crash tested, and can easily be secured inside handicap cars. W5, our fixed frame wheelchair for an active lifestyle is crash tested with great success in collaboration with the DAHL docking system.

The DAHL docking station ensures that the user doesn't have to relocate to a car seat, since it doesn't give the same comfortable sitting position as the wheelchair. The W5 connects to the car using a DAHL docking bracket mounted on the wheelchair. A comfortable sitting position is crucial for the user's well-being, when spending many hours weekly inside a car. With the DAHL docking station, the user will experience an unprecedented flexibility and safety inside the car, and car transport is facilitated for users as well as relatives.

The W5 has a rigid and durable frame while at the same time being a special design, which allows the active wheelchair despite its low weight of about 6 kg to withstand collisions with the DAHL docking system. The W5 is therefore well suited for car fastening using the DAHL docking system and is preferred by many of our customers. In addition to the W5, the Rex 350 electric wheelchair and the A-run comfort wheelchair are also crash tested and approved by the DAHL docking system.



Advantages of the W5 with the DAHL Docking System:

- › The W5 is tested based on ISO 10542-1: 2008 Wheelchair tiedown and occupant-restraint systems – SWM (Specific Wheelchair Models)
- › The W5 is crash tested based on ISO 7176-19 : 2008 « Wheeled mobility devices for use as seats in motor vehicles »
- › The W5 has a rigid and durable frame and is constructed to be combatable with wheelchair clamping using the DAHL docking station
- › The W5 is TÜV certified and CE marked
- › Improved sitting comfort in the car
- › Ensures greater safety while driving
- › Makes car transportation easier and provides higher flexibility in everyday life





WOLTURNUS

Wheelchairs built for freedom